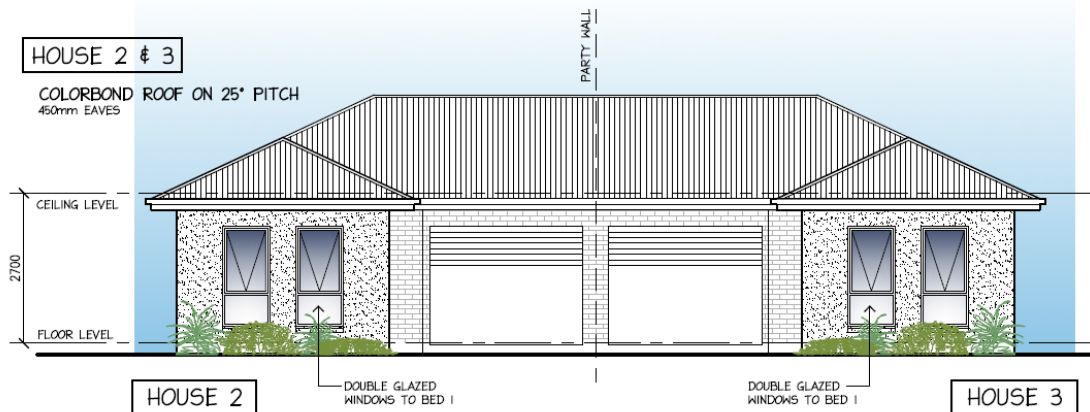


House & Land Package



Houses 2&3, rear of 3 Winton Ave, Warradale

This package includes:

FIXED PRICE HOUSE & LAND PACKAGE per Home

- **Including 3 bedrooms, 2 bathrooms & single garage**
- **Built in Robes to bedrooms with WIR to bedroom 1**
- **Quality Rossdale Homes SELECT Specification**
- **2.7m ceilings & render to front facade**
- **Absolute Fixed Price footings and siteworks**
- **Paving to common driveway Included**
- **Stainless steel appliances**
- **Automated Panel lift door to front**
- **Insulation to ceilings and walls**
- **Instantaneous hot water service**
- **Close to shops and schools**
- **Overhead cupboards with rangehood Included to kitchen**
- **Double Glazed windows to front Included**

HOUSE AND LAND FIXED: \$496,000

Call me today to meet and review the plans with specification, also the plans can be modified if required.

Images for illustration purposes only

FOR THIS OFFER CALL
PHONE: LEON MARGARITIS
0402 47 1977

Because trust is a must
www.rossdalehomes.com.au