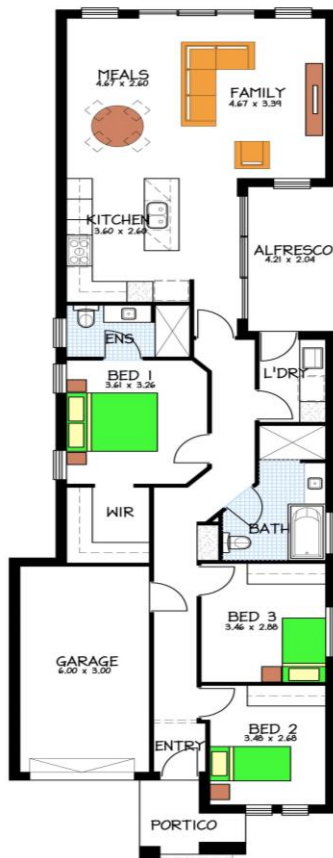


House & Land Package



Both allotments sold exclusively as a house and land package through Rossdale Homes.

Address: 79a & b Bower street, Woodville

79a = 430m² (approx.)

79b = 430m² (approx.)

Land price: \$350k per allotment

Plans available with DOUBLE GARAGE (STCC)

Single garage Home & Land package from \$531,115 includes:

- Fully Rendered front façade as per Image.
- Rossdale Homes Sovereign spec. package.
- Allowance for above standard footings.
- Three large bedrooms
- Overhead cupboards
- Stainless steel appliances
- Soft close joinery throughout
- Remote panel door to garage
- 25-Degree roof pitch..
- Options available to change the floor plan and front elevation.
- Turnkey options available.

Disclaimer: All care has been taken in the preparation of this material. No responsibility is taken for any errors or omissions. Details are subject to change without notification. Images for illustration purposes only. E&EO.

FOR THIS OFFER CALL

SAGAR 0430 466 001

Because trust is a must

www.rossdalehomes.com.au