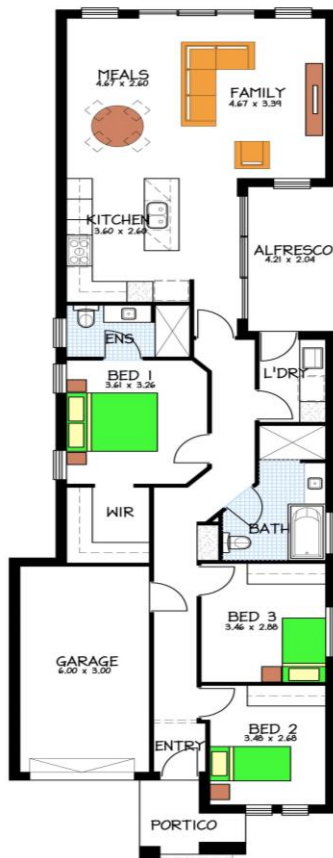


House & Land Package



Address: 79a & b Bower street, Woodville

79a = 430m² (approx.)

79b = 430m² (approx.)

Plans also available with **DOUBLE GARAGE (STCC)**

This package includes:

- Rendered front façade as per Image.
- Rossdale Homes Sovereign (Upgraded) spec.
- Allowance for above standard footings.
- Three large bedrooms, WIR, ENS, Bath & Alfresco
- Overhead cupboards
- Stainless steel appliances
- Soft close joinery throughout
- Remote panel door to garage
- 25-Degree roof pitch.
- Options available to change the floor plan and front elevation.
- Turnkey options available.
- Call today for more options

Disclaimer: All care has been taken in the preparation of this material. No responsibility is taken for any errors or omissions. Details are subject to change without notification. Images for illustration purposes only. E&EO.

FOR THIS OFFER CALL

SAGAR 0430 466 001

Because trust is a must

www.rossdalehomes.com.au